


AVI Backup Manager Manual

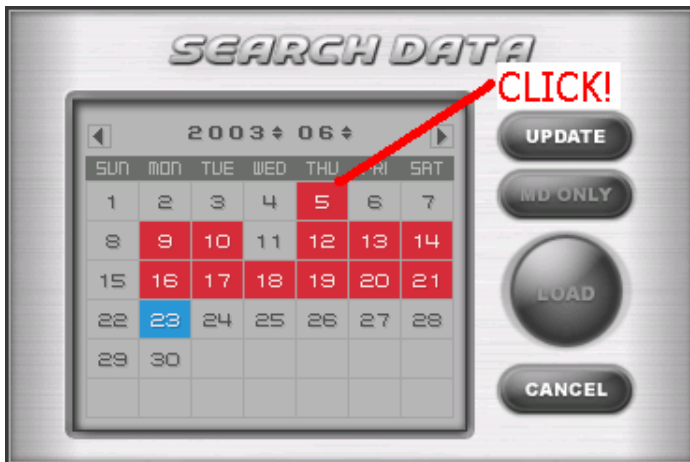
<Backup>

※ HDD Backup

1. Click AVI Backup Manager () icon to run program.



2. Click Calendar () icon and select recorded date which is indicated in red color. Click [Load] button.



3. Choose channel you want to backup.



4. Click the time you want to start backup in time table. (indicated in red color)



The play button must be on.

5. Click the end time of backup.

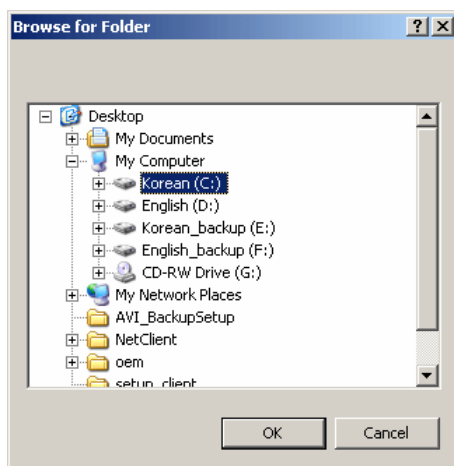


The play button must be on.

6. Click [Converting] button to convert to AVI file format.



7. Choose folder from directory you want to backup. Click [OK] button.



8. AVI Backup Processing

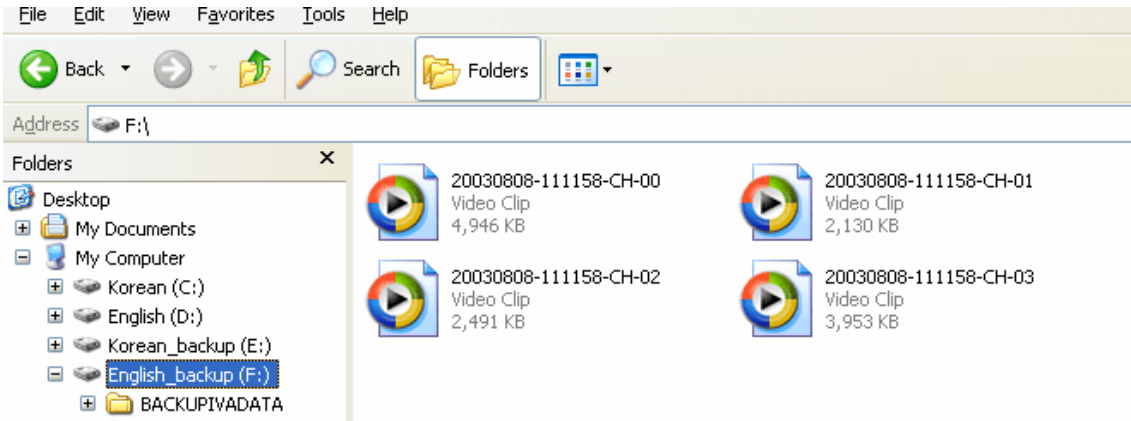


9. Converting to AVI completed.



Play backup data through Windows Media-Player

Find data converted to AVI file format. Run AVI file.



Direct confirm through Windows Media-Player.



- The End -