

Backup Manager 2.5 Manual

CCTV SYSTEM

♣ Contents ♣

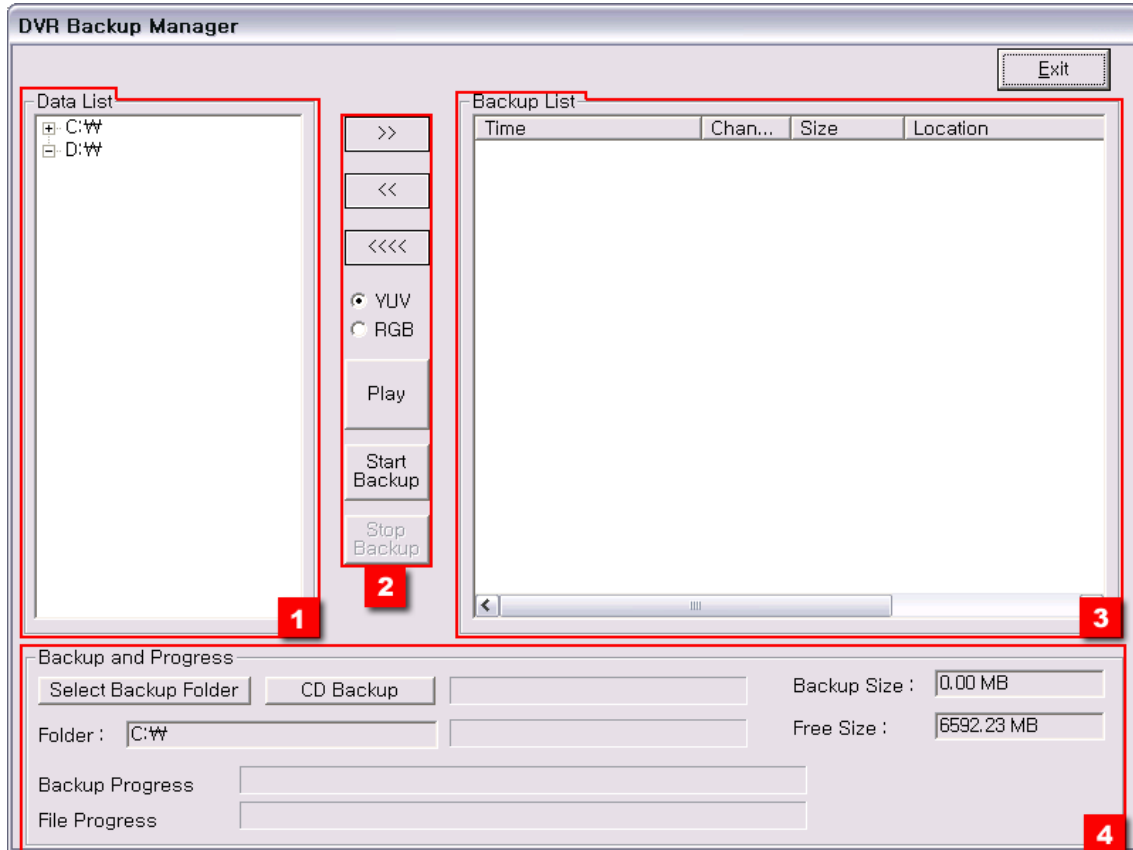
1. Backup Manager-----	3
※ Detailed description-----	3
※ Backup-----	5
HDD Backup-----	8
CD Backup-----	9
※ Play Backup data-----	10
Play HDD Backup data-----	10
Play CD Backup data-----	11
※ Error Message List-----	11

1. Backup Manager

1.Run Backup Manager program.

(Start – Program – DVR Server 2.0 – Backup Manager)

2. Screen will appear as following:





※ Detailed description

1. Information regarding recorded data will be indicated. (date, channel, time)

2. Icon

 : Move recorded data to [3]Backup List

 : Remove added data from [3]Backup List

 : Remove all added data from [3]Backup List

YUV : Search screen will be displayed in (YUV) screen mode. (Basic setting)

RGB : Search screen will be displayed in (RGB) screen mode.

YUV is basic setting. (Please convert to RGB mode when cracking in image .)

Reason : Graphic Card may not support YUV mode.

DVR Server BackupManager V2.0

Play : Play backup data

Start Backup : Start Backup

Stop Backup : Stop Backup

3. Added data to Backup List will be indicated as follow:

Time	Chan...	Size	Location
2003/05/03-09 Hour	1	16.00 MB	D:\VADATA\200305
2003/05/03-10 Hour	1	16.00 MB	D:\VADATA\200305
2003/05/03-09 Hour	2	16.00 MB	D:\VADATA\200305
2003/05/03-10 Hour	2	16.00 MB	D:\VADATA\200305
2003/05/03-10 Hour	4	16.00 MB	D:\VADATA\200305

4. Following indicates backup folder and progress table.

Backup and Progress	
Select Backup Folder <input type="button" value="CD Backup"/>	Backup Size : 0.00 MB
Folder : C:\	Free Size : 6592.23 MB
Backup Progress <input type="text"/>	
File Progress <input type="text"/>	

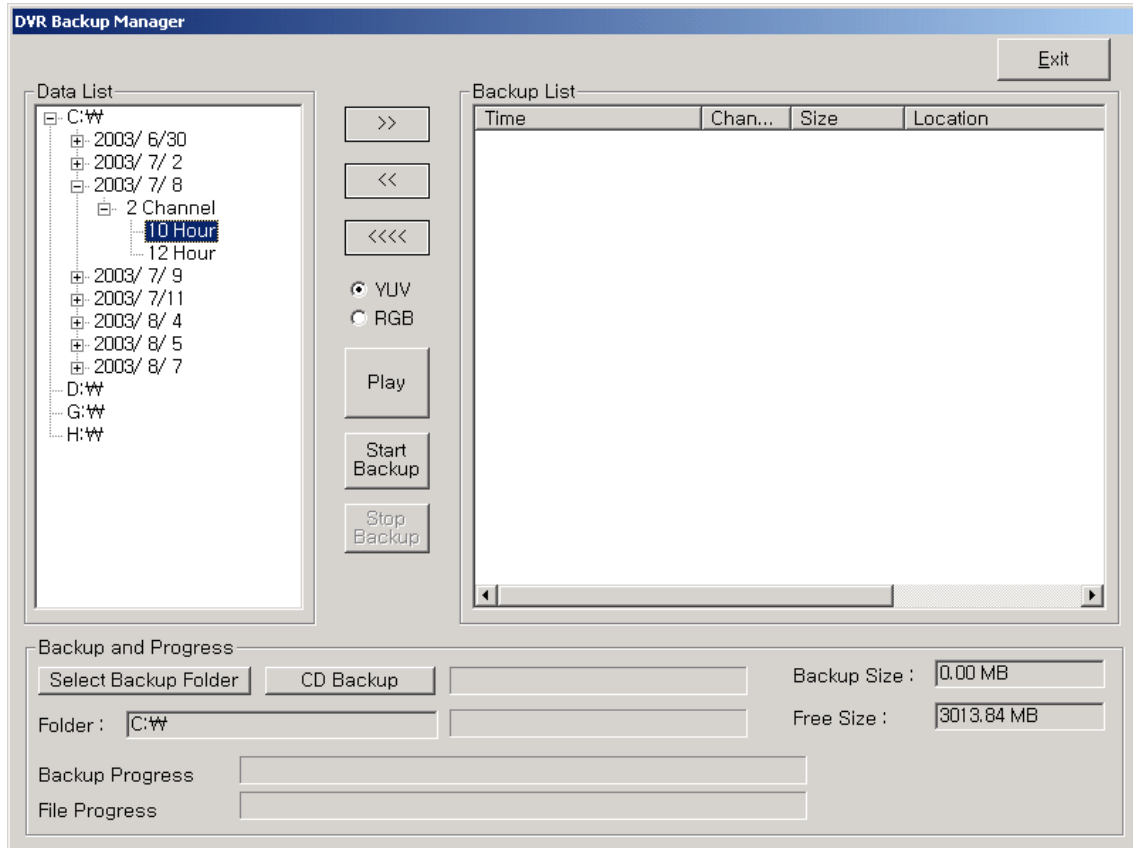
Select Backup Folder : Select folder to backup

CD Backup : Direct backup to CD (CD-RW required)

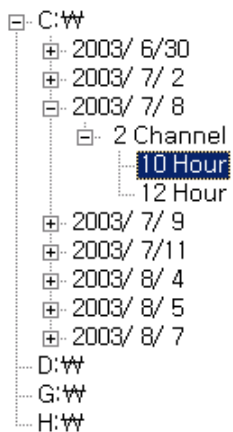
<Backup>

※ HDD Backup

1. Click Backup Manager () icon to run program.



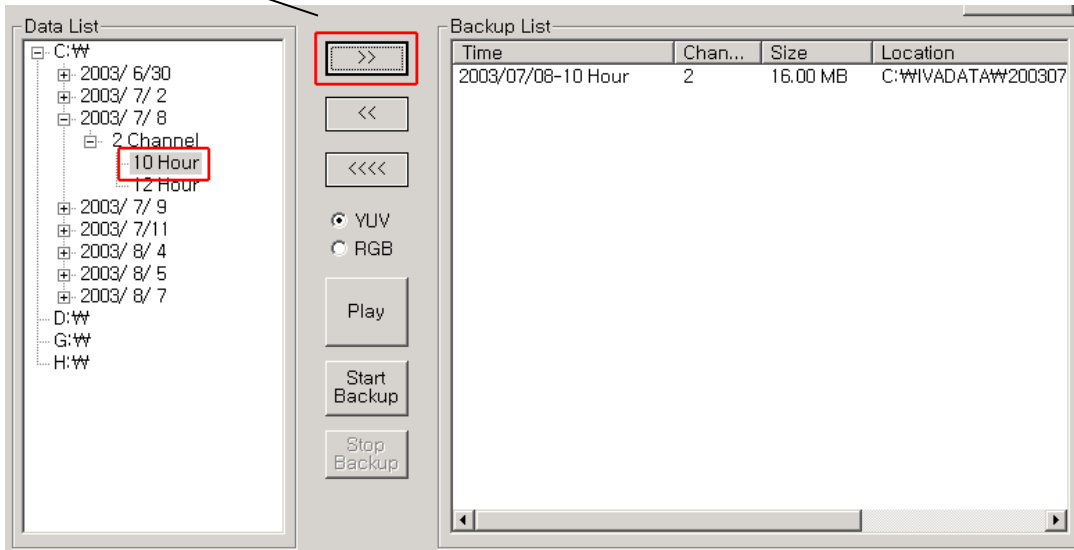
2. Choose date & time from Data List to backup.



Ex) Indicates 2003/7/8 CH2 10 o'clock.

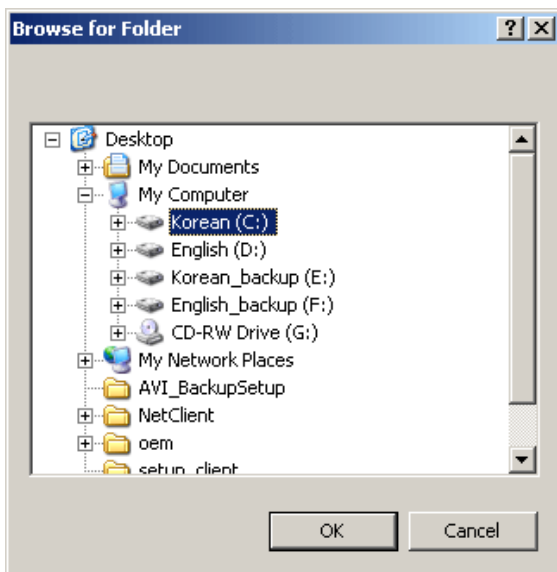
3. Move selected data from Data List to backup list.

Click () icon to move data.



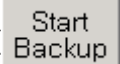
4. Click () icon and setup directory to backup.

5. Choose HDD to backup and click [OK] button.

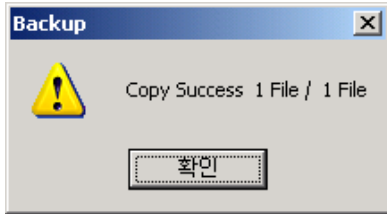


Example selects C: Drive.


DVR Server BackupManager V2.0

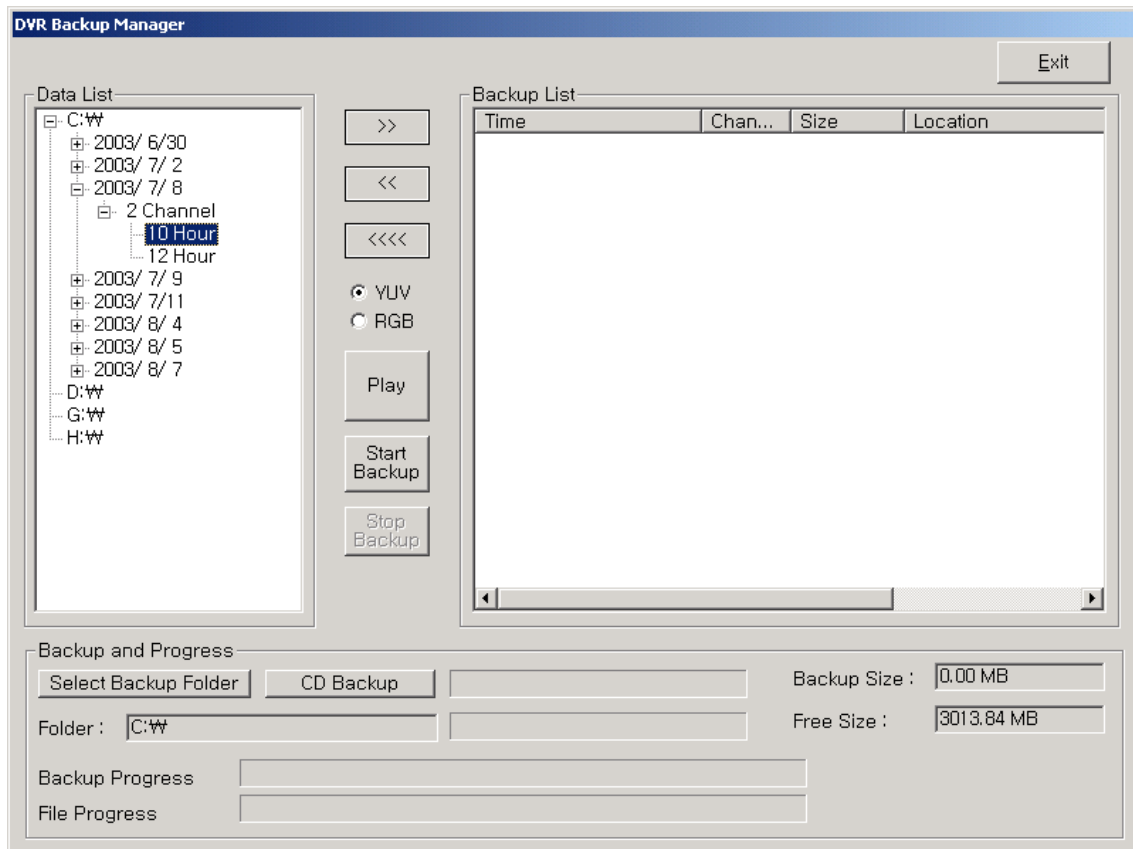
6. Click () icon after selecting backup directory.

7. Message as below will be displayed after normal operation.

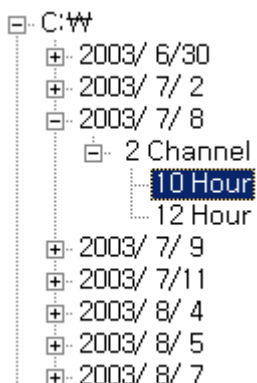


※ CD Backup

1. Click Backup Manager () icon to run program.




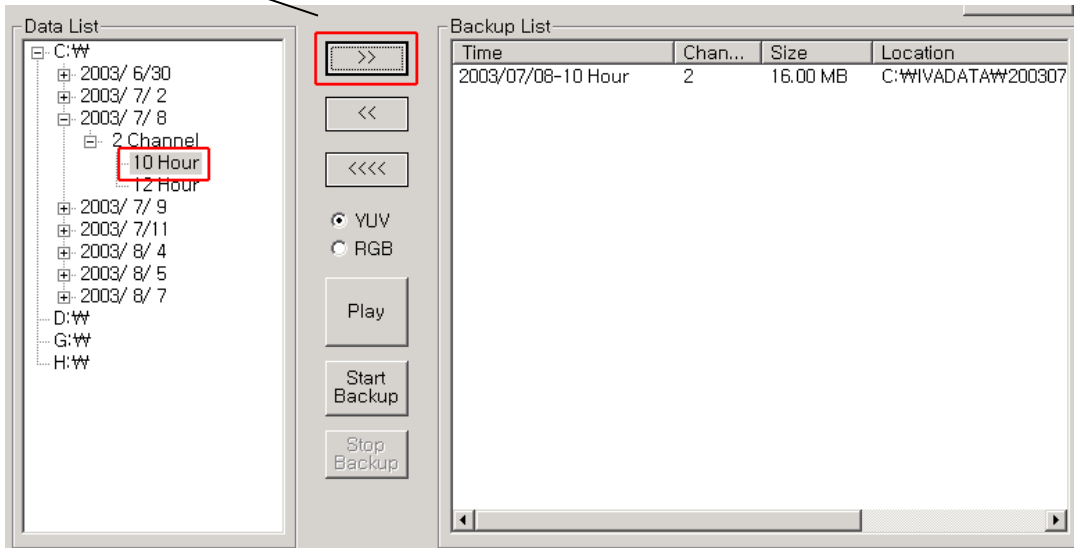
2. Choose date & time from Data List to backup.




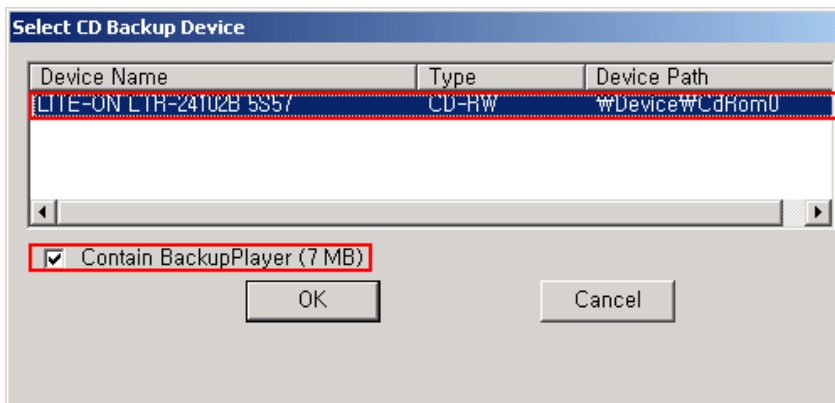
Ex) Indicates 2003/7/8 CH2 10 o'clock.

3. Move selected data from Data List to backup list.

Click () icon to to move data.



4. Click () icon without selecting backup folder.

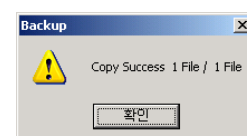


5. Choose CD – RW device and click [Contain Backup Player].

(Attention: Above indicated in red box must be clicked.)

6. Click () icon to start backup.

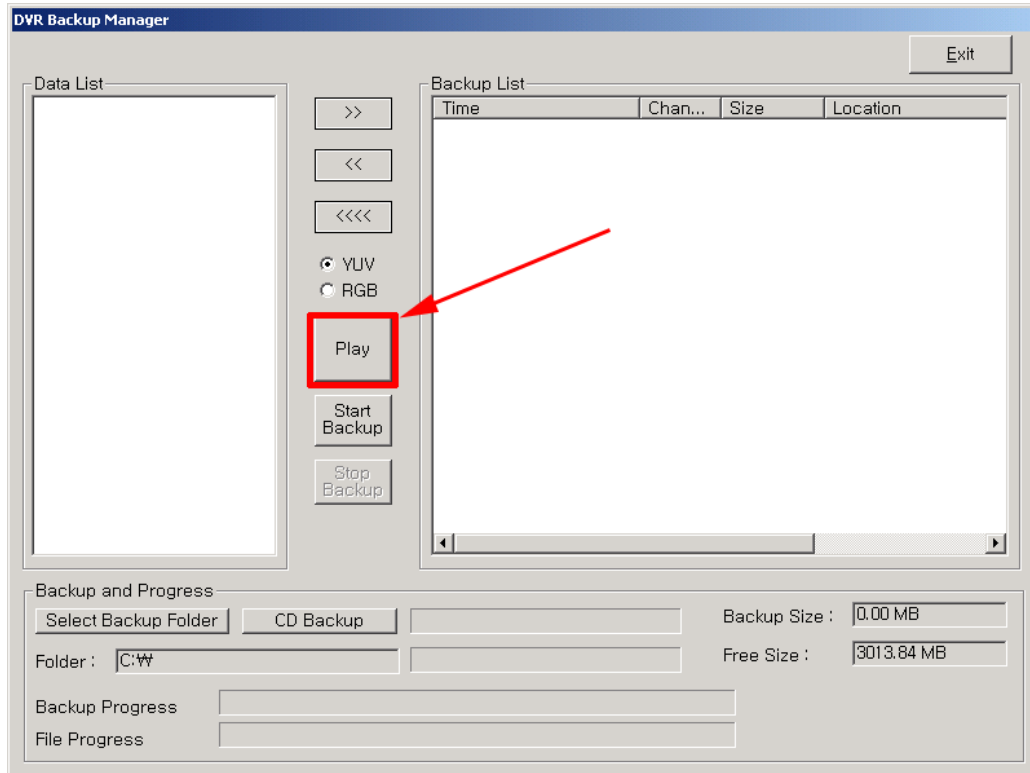
7. Message as below will be displayed after normal operation.



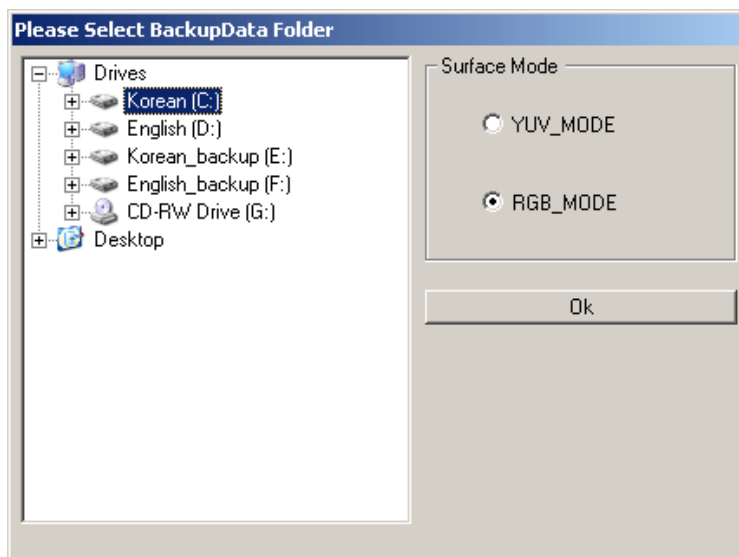
DVR Server BackupManager V2.0

※ Play HDD backup data

1. Click Backup Manager () icon to run program.



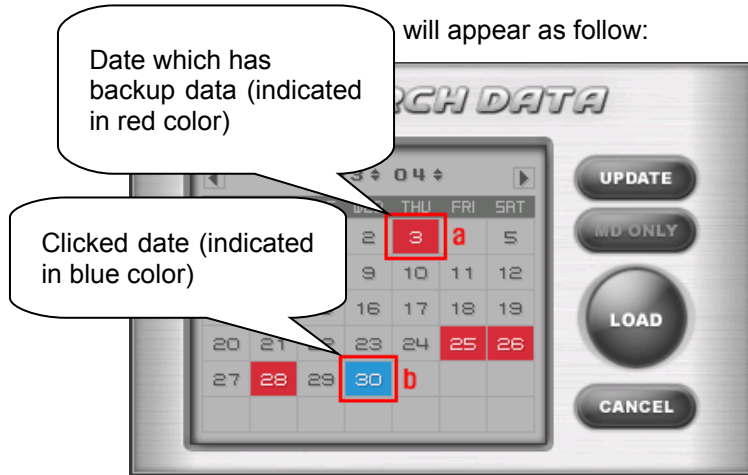
2. Click [Play] button and find directory of backup data.



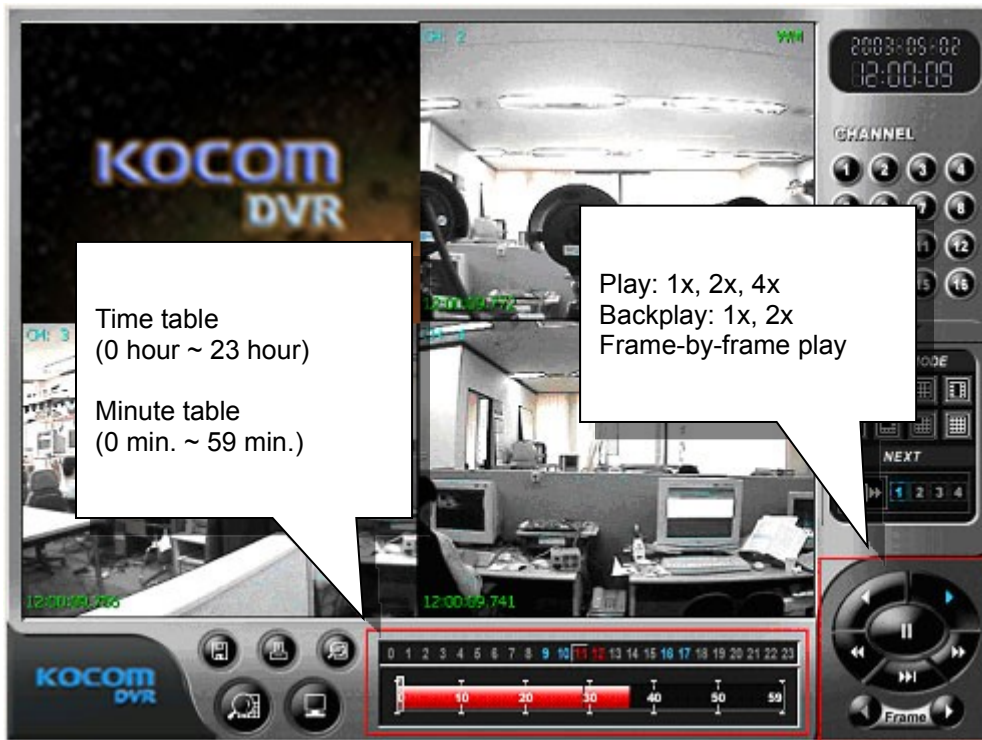
3. Choose directly and click [OK] button.

Select RGB Mode.

will appear as follow:



5. Choose date you want to play. Click [Load] button.




6. To exit playback click () icon to return to Backup Manager.

DVR Server BackupManager V2.0

※ Play CD backup data

1. Insert CD to CDROM.

(Run CDROM Drive -> Backup Player -> Click DvrSearch [ icon.



2. Select CDROM directory and click [OK] button.



1. *There is no medium in the burner*
: CD is not inserted to CD-RW.
2. *If you want to Backup CD. Please reboot or end process 'imapi.exe'*
: Please reboot PC OR stop 'imapi.exe' by force from Windows Task Manager.
3. *Set CD recorder failed...*
: Problem in CD-RW setting.
4. *Not Enough Hdd Disk Free Space to Create CD IMAGE*
: HDD must have enough free space as to CD when CD Backup. (ex: 720MB)
5. *The call failed because IMAPI has not bean opened with Open.*
: Operating System(O/S) does not support CD Backup.

- End -